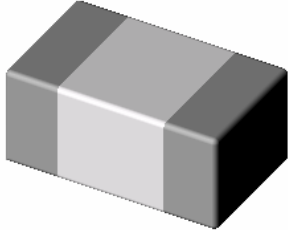




Chilisin Electronics Singapore Pte Ltd

SMD Multi-Layers Ceramic Inductors

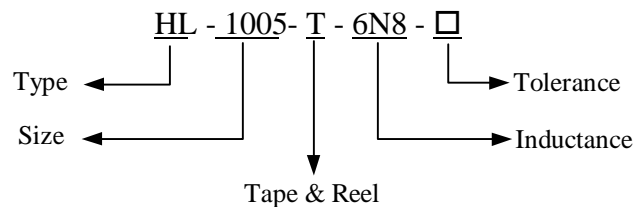


Our range of Multilayer Ceramic Chips Inductors offers various sizes.

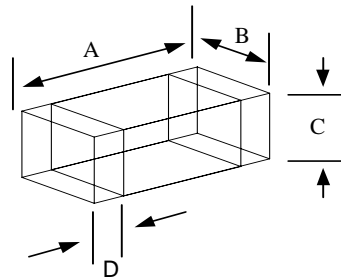
Which are specially designs for High frequency products, which are compact and highly dense with component.

Its Provide very high SRF.

Ordering Code:



Dimension:



Units : mm (inches)

Part Number	A	B	C	D	Inductance
HL-1005 (0402)	1.0 ± 0.15 (0.039±0.006)	0.50 ± 0.15 (0.0196 ± 0.006)	0.50 ± 0.15 (0.0196 ± 0.006)	0.25 ± 0.15 (0.98±0.006)	1.0nH to 47nH
HL-1608 (0603)	1.6 ± 0.2 (0.063±0.008)	0.80 ± 0.15 (0.031 ± 0.006)	0.80 ± 0.15 (0.031 ± 0.006)	0.3 ± 0.2 (0.012±0.008)	1.2nH to 100nH
HL-201209 (0805)	2.00 ± 0.2 (0.079±0.0008)	1.25 ± 0.2 (0.049 ± 0.008)	0.9 ± 0.2 (0.0354 ± 0.008)	0.5 ± 0.3 (0.020±0.012)	1.5nH to 100nH
HL-201212 (0805)	2.00 ± 0.2 (0.079±0.0008)	1.25 ± 0.2 (0.049 ± 0.008)	1.25 ± 0.2 (0.049 ± 0.008)	0.5 ± 0.3 (0.020±0.012)	120nH to 470nH

[Next](#)

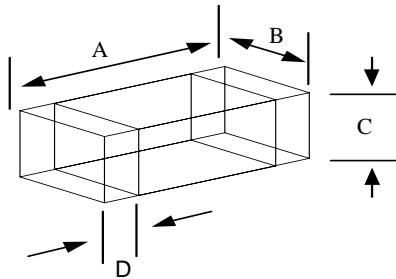
[Back](#)



Chilisin Electronics Singapore Pte Ltd

SMD Multi-Layers Ceramic Inductors

HL -100505 Series



A	1.0 ± 0.10 mm
B	0.5 ± 0.10 mm
C	0.5 ± 0.10 mm
D	0.23 ± 0.10 mm
E	

Electrical Characteristics:

Part Number	Inductance nH	Q min	Test Freq. MHz	SRF MHz Min	DCR Ω Max	IDC mA Max
HL-100505-1N0 S	1.0 ± 0.3nH	8	100	>15000	0.18	300
HL-100505-1N2 S	1.2 ± 0.3nH	8	100	>15000	0.18	300
HL-100505-1N5 S	1.5 ± 0.3nH	8	100	>15000	0.20	300
HL-100505-1N8 S	1.8 ± 0.3nH	8	100	14000	0.21	300
HL-100505-2N2 S	2.2 ± 0.3nH	8	100	12000	0.24	300
HL-100505-2N7 S	2.7 ± 0.3nH	8	100	9500	0.26	300
HL-100505-3N3 □	3.3 ± 10% ± 0.3nH	8	100	8500	0.29	300
HL-100505-3N9 □	3.9 ± 10% ± 0.3nH	8	100	7000	0.33	300
HL-100505-4N7 □	4.7 ± 10% ± 0.3nH	8	100	6000	0.36	300
HL-100505-5N6 □	5.6 ± 10% ± 0.3nH	8	100	5400	0.41	300
HL-100505-6N8 □	6.8 ± 5% ± 10%	8	100	5000	0.48	250
HL-100505-8N2 □	8.2 ± 5% ± 10%	8	100	4600	0.56	250
HL-100505-10N □	10 ± 5% ± 10%	8	100	3700	0.63	250
HL-100505-12N □	12 ± 5% ± 10%	8	100	3200	0.75	250
HL-100505-15N □	15 ± 5% ± 10%	8	100	3100	0.83	250
HL-100505-18N □	18 ± 5% ± 10%	10	100	2900	0.98	200
HL-100505-22N □	22 ± 5% ± 10%	10	100	2100	1.20	200
HL-100505-27N □	27 ± 5% ± 10%	10	100	1900	1.35	200
HL-100505-33N □	33 ± 5% ± 10%	10	100	1600	1.50	200
HL-100505-39N □	39 ± 5% ± 10%	10	100	1400	1.80	150
HL-100505-47N □	47 ± 5% ± 10%	12	100	1200	1.95	150

[Next](#)

S = ± 0.3nH, K = ± 10% , J = ± 5%

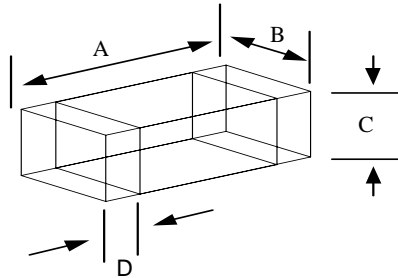
[Back](#)



Chilisin Electronics Singapore Pte Ltd

SMD Multi-Layers Ceramic Inductors

HL -160808 Series



A	1.6 ± 0.15 mm
B	0.8 ± 0.15 mm
C	0.8 ± 0.15 mm
D	0.3 ± 0.2 mm
E	

Electrical Characteristics:

Part Number	Inductance nH	Q min	Test Freq. MHz	SRF MHz Min	DCR Ω Max	IDC mA Max
HL-160808-1N0 S	1.0 ± 0.3nH	8	100	>17000	0.10	300
HL-160808-1N2 S	1.2 ± 0.3nH	8	100	>17000	0.10	300
HL-160808-1N5 S	1.5 ± 0.3nH	8	100	>17000	0.10	300
HL-160808-1N8 S	1.8 ± 0.3nH	8	100	13000	0.15	300
HL-160808-2N2 S	2.2 ± 0.3nH	8	100	12000	0.15	300
HL-160808-2N7 S	2.7 ± 0.3nH	8	100	8600	0.20	300
HL-160808-3N3 □	3.3 ± 10% ± 0.3nH	8	100	6800	0.25	300
HL-160808-3N9 □	3.9 ± 10% ± 0.3nH	8	100	6500	0.25	300
HL-160808-4N7 □	4.7 ± 10% ± 0.3nH	8	100	5400	0.30	300
HL-160808-5N6 □	5.6 ± 10% ± 0.3nH	8	100	4800	0.30	300
HL-160808-6N8 □	6.8 ± 5% ± 10%	8	100	4600	0.35	300
HL-160808-8N2 □	8.2 ± 5% ± 10%	8	100	3800	0.40	300
HL-160808-10N □	10 ± 5% ± 10%	8	100	3700	0.45	300
HL-160808-12N □	12 ± 5% ± 10%	8	100	3200	0.50	300
HL-160808-15N □	15 ± 5% ± 10%	8	100	2900	0.55	300
HL-160808-18N □	18 ± 5% ± 10%	10	100	2100	0.60	300
HL-160808-22N □	22 ± 5% ± 10%	10	100	2100	0.65	300
HL-160808-27N □	27 ± 5% ± 10%	10	100	2000	0.70	300
HL-160808-33N □	33 ± 5% ± 10%	10	100	1600	0.80	300
HL-160808-39N □	39 ± 5% ± 10%	10	100	1500	0.85	300
HL-160808-47N □	47 ± 5% ± 10%	12	100	1200	1.00	300
HL-160808-56N □	56 ± 5% ± 10%	12	100	1100	1.10	300
HL-160808-68N □	68 ± 5% ± 10%	12	100	1000	1.20	300
HL-160808-82N □	82 ± 5% ± 10%	12	100	850	1.80	300
HL-160808-R10 □	100 ± 5% ± 10%	12	100	750	2.00	300
HL-160808-R12 □	120 ± 5% ± 10%	8	50	700	2.30	300
HL-160808-R15 □	150 ± 5% ± 10%	8	50	650	2.40	300
HL-160808-R18 □	180 ± 5% ± 10%	8	50	550	2.70	300
HL-160808-R22 □	220 ± 5% ± 10%	8	50	450	2.80	300

[Next](#)

S = ± 0.3nH, K = ± 10% , J = ± 5%

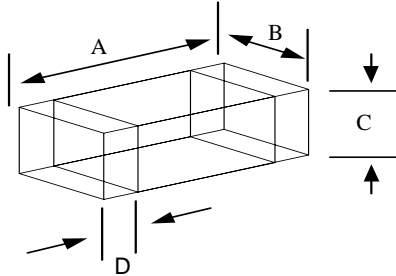
[Back](#)



Chilisin Electronics Singapore Pte Ltd

SMD Multi-Layers Ceramic Inductors

HL-201209 Series



A	2.0 ± 0.2 mm
B	1.2 ± 0.2 mm
C	0.85 ± 0.2 mm
D	0.45 ± 0.2 mm
E	

Electrical Characteristics:

Part Number	Inductance nH	Q min	Test Freq. MHz	SRF MHz Min	DCR Ω Max	IDC mA Max
HL-201209-1N5 S	1.5 ± 0.3nH	10	100	>6000	0.15	300
HL-201209-1N8 S	1.8 ± 0.3nH	10	100	>6000	0.15	300
HL-201209-2N2 S	2.2 ± 0.3nH	10	100	>6000	0.15	300
HL-201209-2N7 S	2.7 ± 0.3nH	12	100	>6000	0.15	300
HL-201209-3N3 □	3.3 ± 10% ±0.3nH	12	100	>6000	0.20	300
HL-201209-3N9 □	3.9 ± 10% ±0.3nH	12	100	5600	0.22	300
HL-201209-4N7 □	4.7 ± 10% ±0.3nH	12	100	5500	0.30	300
HL-201209-5N6 □	5.6 ± 10% ±0.3nH	12	100	4700	0.35	300
HL-201209-6N8 □	6.8 ± 5% ± 10%	15	100	3900	0.35	300
HL-201209-8N2 □	8.2 ± 5% ± 10%	15	100	3200	0.40	300
HL-201209-10N □	10 ± 5% ±10%	15	100	3100	0.40	300
HL-201209-12N □	12 ± 5% ± 10%	15	100	2800	0.45	300
HL-201209-15N □	15 ± 5% ±10%	15	100	2400	0.45	300
HL-201209-18N □	18 ± 5% ±10%	15	100	2100	0.50	300
HL-201209-22N □	22 ± 5% ±10%	15	100	2000	0.50	300
HL-201209-27N□	27 ± 5% ±10%	15	100	1800	0.55	300
HL-201209-33N □	33 ± 5% ±10%	15	100	1700	0.60	300
HL-201209-39N □	39 ± 5% ±10%	18	100	1400	0.65	300
HL-201209-47N□	47 ± 5% ±10%	18	100	1200	0.70	300
HL-201209-56N □	56 ± 5% ± 10%	18	100	1000	0.75	300
HL-201209-68N □	68 ± 5% ± 10%	18	100	900	0.80	300
HL-201209-82N□	82 ± 5% ± 10%	18	100	900	0.90	300
HL-201209-R10 □	100 ± 5% ±10%	18	100	700	0.90	300
HL-201212-R12 □	120 ± 5% ± 10%	13	50	600	0.95	300
HL-201212-R15 □	150 ± 5% ±10%	13	50	500	1.00	300
HL-201212-R18 □	180 ± 5% ±10%	13	50	430	1.10	300
HL-201212-R22 □	220 ± 5% ±10%	12	50	400	1.20	300
HL-201212-R27 □	270 ± 5% ±10%	12	50	340	1.30	300
HL-201212-R33 □	330 ± 5% ±10%	12	50	320	1.50	300
HL-201212-R39 □	390 ± 5% ±10%	10	50	270	1.60	300
HL-201212-R47 □	470 ± 5% ±10%	10	50	250	1.80	300

[Next](#)

S = ± 0.3nH, K = ± 10% , J = ± 5%

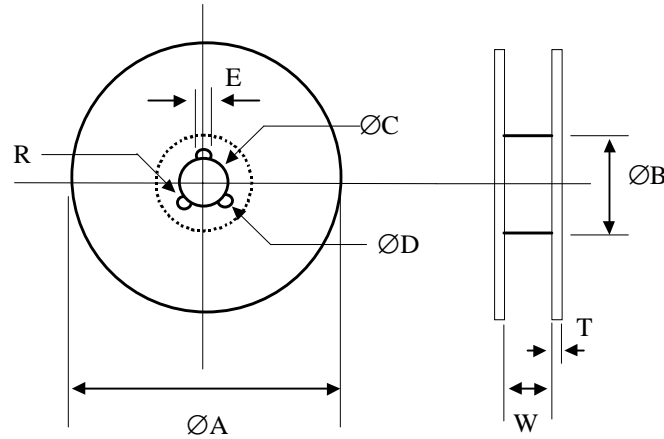
[Back](#)



Chilisin Electronics Singapore Pte Ltd

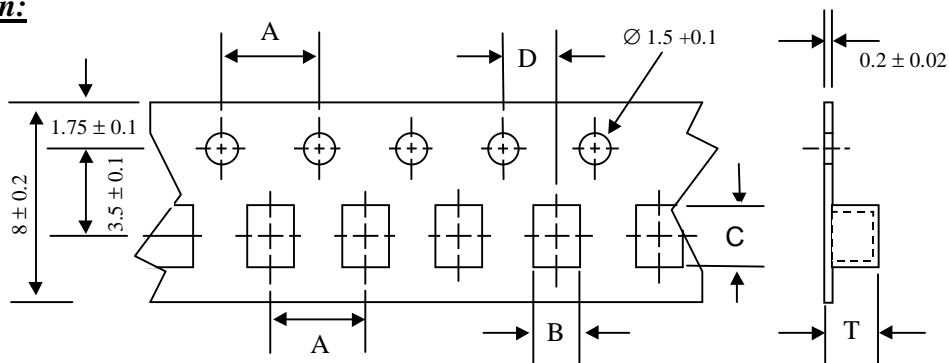
SMD Multi-Layers Ceramic Inductors

Reel Dimensions:



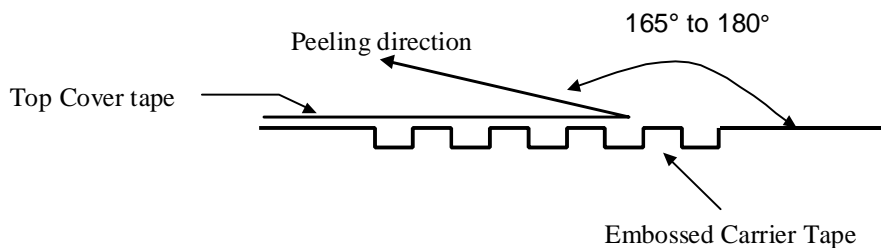
ØA	ØB	ØC	ØD	E	W	T	R
178 ±2	60 ± 1	13.0 ± 0.5	21.0 ± 0.8	2.0 ± 0.5	10.0 ± 1.0	2.0 ± 0.5	1.0

Tape Specification:



Type	A	B	C	D	T
HL - 100505	2.0 ± 0.1	0.6 ± 0.1	1.1 ± 0.1	1.0 ± 0.1	Max 1.0
HL - 160808	4.0 ± 0.1	1.0 ± 0.1	1.8 ± 0.1	2.0 ± 0.1	Max 1.3
HL - 201209	4.0 ± 0.1	1.6 ± 0.1	2.4 ± 0.1	2.0 ± 0.1	Max 1.3

Tape peeling:



[Next](#)

[Back](#)