



# Chilisin Electronics Singapore Pte Ltd

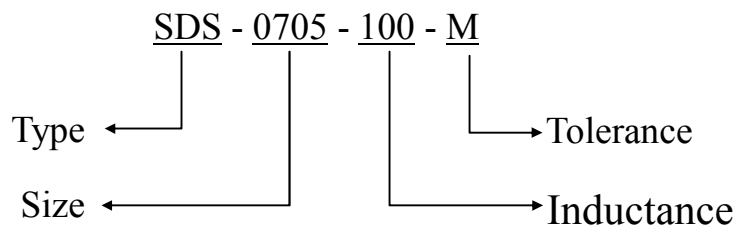
## SMD Shielded Power Inductor, SDS Series

### Feature:

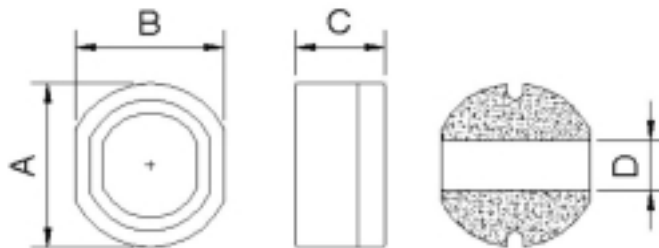


- Compact in Size, High mounting Density
- Magnetically shielded
- Large Permissible DC Current and Low DC Resistance
- Automatic Pick and Place machine is applicable
- Reflow soldering is applicable

### Ordering Code:



### Dimension in mm:



Type	A	B	C	D typ.
SDS - 0705 - □□□	7.8 ± 0.3	7.0 ± 0.3	5.0 ± 0.5	2.1
SDS - 1005 - □□□	10.0 ± 0.4	9.0 ± 0.3	5.4 ± 0.4	2.1

### Electrical:

Type	Inductance	DCR (ohm)	Rated Current (A)
SDS - 0705 - □□□	10μH ~ 270μH	0.07Ω ~ 1.30Ω	1.65A ~ 0.33A
SDS - 1005 - □□□	10μH ~ 470μH	0.06Ω ~ 1.50Ω	2.06A ~ 0.33A

[Next](#)

[Back](#)



# Chilisin Electronics Singapore Pte Ltd

SMD Shielded Power Inductor, SDS Series

SDS-0705 Type

## ELECTRICAL CHARACTERISTICS

Part No.	Inductance (uH)	DCR (ohm) Max.	Rated DC Current (Amps) max.
SDS-0705-100-M	10	0.07	1.65
SDS-0705-120-M	12	0.07	1.57
SDS-0705-150-M	15	0.08	1.39
SDS-0705-180-M	18	0.10	1.29
SDS-0705-220-M	22	0.13	1.12
SDS-0705-270-M	27	0.16	1.06
SDS-0705-330-M	33	0.18	0.97
SDS-0705-390-M	39	0.18	0.91
SDS-0705-470-M	47	0.27	0.80
SDS-0705-560-M	56	0.29	0.76
SDS-0705-680-M	68	0.33	0.68
SDS-0705-820-M	82	0.43	0.62
SDS-0705-101-M	100	0.49	0.55
SDS-0705-121-M	120	0.68	0.49
SDS-0705-151-M	150	0.94	0.44
SDS-0705-181-M	180	1.00	0.40
SDS-0705-221-M	220	1.18	0.36
SDS-0705-271-M	270	1.30	0.33

**K = ±10% Tolerance**

**L = ±15% Tolerance**

**M = ±20% Tolerance**

[Next](#)

[Back](#)



# Chilisin Electronics Singapore Pte Ltd

SMD Shielded Power Inductor, SDS Series

SDS-1005 Type

## ELECTRICAL CHARACTERISTICS

Part No.	Inductance (uH)	DCR (ohm) Max.	Rated D.C. Current (A) Max.
SDS-1005-100-M	10	0.06	2.06
SDS-1005-120-M	12	0.07	1.94
SDS-1005-150-M	15	0.07	1.72
SDS-1005-180-M	18	0.08	1.58
SDS-1005-220-M	22	0.08	1.42
SDS-1005-270-M	27	0.10	1.32
SDS-1005-330-M	33	0.11	1.16
SDS-1005-390-M	39	0.12	1.10
SDS-1005-470-M	47	0.14	1.00
SDS-1005-560-M	56	0.19	0.93
SDS-1005-680-M	68	0.21	0.85
SDS-1005-820-M	82	0.28	0.79
SDS-1005-101-M	100	0.34	0.72
SDS-1005-121-M	120	0.37	0.63
SDS-1005-151-M	150	0.51	0.55
SDS-1005-181-M	180	0.57	0.50
SDS-1005-221-M	220	0.78	0.47
SDS-1005-271-M	270	0.87	0.41
SDS-1005-331-M	330	1.20	0.37
SDS-1005-391-M	390	1.34	0.35
SDS-1005-471-M	470	1.50	0.33

**K = ±10% Tolerance**

**L = ±15% Tolerance**

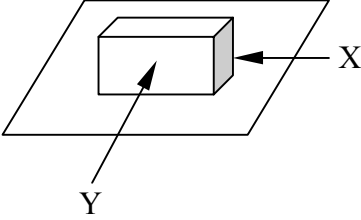
**M = ±20% Tolerance**

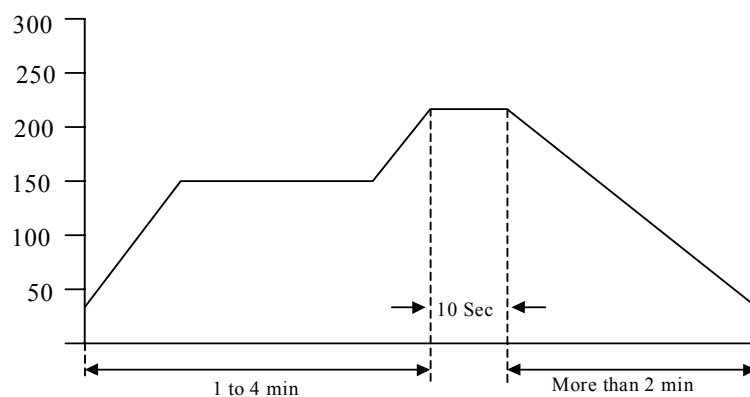
[Next](#)

[Back](#)



### Component Specification for SDS Shielded Power Inductors

Operating Temperature	-30°C to +85°C
Appearance Inspection	No external defects by visual inspection
Terminal Strength	<p>After soldering between copper plate and terminals of coil, Push in two directions of X and Y. (refer to figure below) Withstanding the below conditions.</p> <p>15.0N 10 sec. SDS0705 20.0N 10 sec. SDS1005 Terminal should not peel off.</p> 
Heat endurance IR re-flow	Refer to below Graph
Insulating resistance	Over 100MΩ at 100v DC for 1 minute between wire and core
Temperature characteristics	Inductance Coefficient (0 ~ 2,000) X 10 <sup>-6</sup> / °C (-25°C ~ +80°C)
Humidity Characteristics	Inductance deviation within ±5% after 96 hours in 90% ~ 95% Relative humidity at 40% ± 2°C and 1 hour drying under normal condition
Vibration Resistance	Inductance deviation within ±50%, after vibration for 1 hour in each of the three orientations at sweep vibration (10Hz ~ 55Hz ~ 10Hz) With 1.5mm p-p amplitude



[Next](#)

[Back](#)

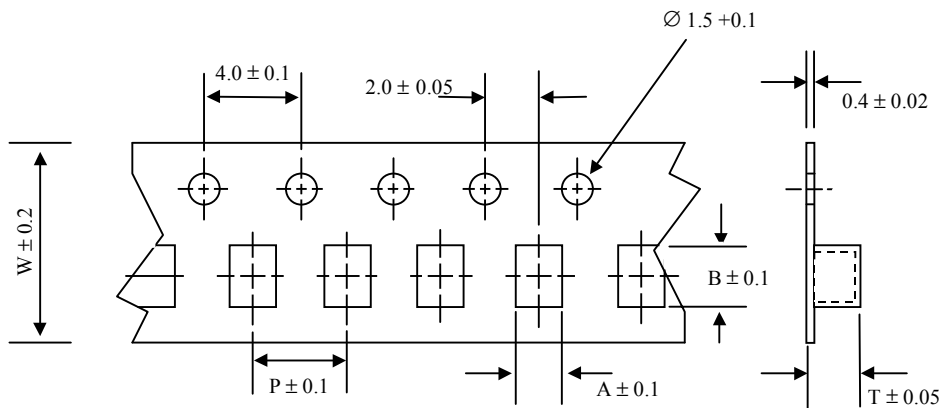


# Chilisin Electronics Singapore Pte Ltd

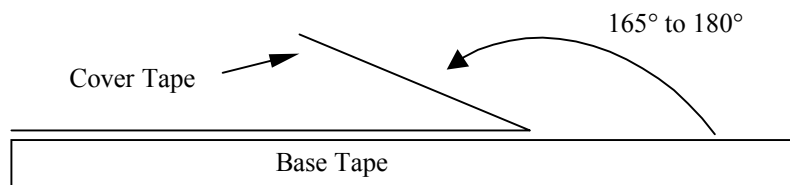
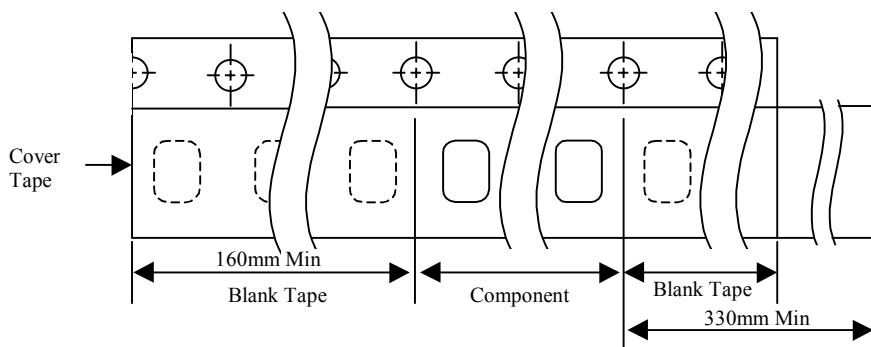
SMD Shielded Power Inductor, SDS Series

Packaging

Tape Dimensions in mm:



Type	A	B	W	P	T	Qty/Reel
SDS 0705	7.5	8.3	16	12	5.70	500
SDS 1005	9.6	10.5	24	16	6.00	500



[Next](#)

[Back](#)