



Chilisin Electronics Singapore Pte Ltd

SMD Shielded Power Chokes, SLF Series

Feature:

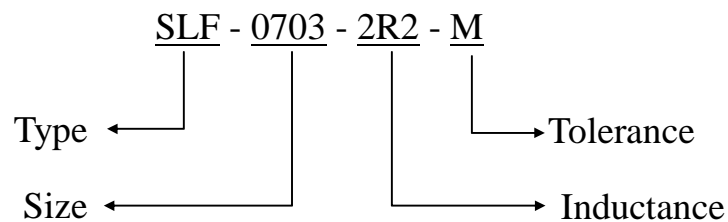


These new SLF Series is specially designed with shielding for the smallest possible size, Low cost and High Performance.

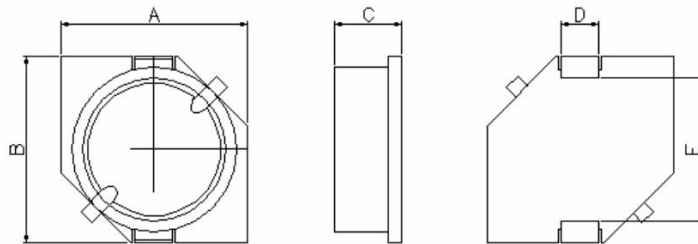
It high energy storage and very low DC Resistance offer Higher saturated current which is suitable for DC to DC conversion for Notebook, Palm Top,

Step up or Step down converters etc.

Ordering Code:



Dimension in mm:



Type	A	B	C	D	E	Weight
SLF-0703 Series	7.0 ± 0.2	7.0 ± 0.2	3.2 ± 0.2	2.0 ± 0.1	4.9 typ.	0.4g
SLF-0704 Series	7.0 ± 0.2	7.0 ± 0.2	4.5 ± 0.3	2.0 ± 0.1	4.9 typ.	0.6g
SLF-10145 Series	10.1 ± 0.3	10.1 ± 0.3	4.5 ± 0.3	3.0 ± 0.1	6.0 typ.	1.3g

Electrical:

Type	Inductance	Rated Current
SLF-0703-□□□-□	3.3 μH to 1000μH	1.9 Amps to 0.13Amps
SLF-0704-□□□-□	3.3 μH to 1000 μH	2.5 Amps to 0.14Amps
SLF-10145-□□□-□	10.0μH to 1500 μH	3.0 Amps to 0.22Amps

[Next](#)

[Back](#)



ELECTRICAL CHARACTERISTICS

PART NO.	Inductance (μH)	Test Frequency	RDC (Ω) ± 20%	IDC (A) MAX.
SLF-0703-3R3-□	3.3	1 KHz	0.023	1.90
SLF-0703-4R7-□	4.7		0.036	1.70
SLF-0703-6R8-□	6.8		0.041	1.60
SLF-0703-100-□	10		0.053	1.40
SLF-0703-150-□	15		0.075	1.10
SLF-0703-220-□	22		0.110	0.96
SLF-0703-330-□	33		0.160	0.75
SLF-0703-470-□	47		0.240	0.67
SLF-0703-680-□	68		0.310	0.59
SLF-0703-101-□	100		0.450	0.45
SLF-0703-151-□	150		0.650	0.37
SLF-0703-221-□	220		1.050	0.29
SLF-0703-331-□	330		1.670	0.22
SLF-0703-471-□	470		2.050	0.20
SLF-0703-681-□	680		3.150	0.16
SLF-0703-102-□	1000		4.780	0.13

[Next](#)

[Back](#)



ELECTRICAL CHARACTERISTICS

PART NO.	Inductance (μ H)	Test Frequency	RDC (Ω) \pm 20%	IDC (A) MAX.
SLF-0704-3R3-□	3.3	1 KHz	0.020	2.50
SLF-0704-4R7-□	4.7		0.030	2.00
SLF-0704-6R8-□	6.8		0.039	1.70
SLF-0704-100-□	10		0.036	1.30
SLF-0704-150-□	15		0.052	1.10
SLF-0704-220-□	22		0.061	0.90
SLF-0704-330-□	33		0.096	0.82
SLF-0704-470-□	47		0.125	0.75
SLF-0704-680-□	68		0.175	0.60
SLF-0704-101-□	100		0.250	0.50
SLF-0704-151-□	150		0.340	0.40
SLF-0704-221-□	220		0.520	0.33
SLF-0704-331-□	330		0.740	0.25
SLF-0704-471-□	470		1.050	0.22
SLF-0704-681-□	680		1.480	0.20
SLF-0704-102-□	1000		2.280	0.14

[Next](#)

[Back](#)



ELECTRICAL CHARACTERISTICS

PART NO.	Inductance (μ H)	Test Frequency	RDC (Ω) $\pm 20\%$	IDC (A) MAX.
SLF-10145-100M-□	10.0	1 KHz	0.0364	3.00
SLF-10145-150M-□	15.0		0.0472	2.40
SLF-10145-220M-□	22.0		0.0591	2.10
SLF-10145-330M-□	33.0		0.0815	1.60
SLF-10145-470M-□	47.0		0.1000	1.40
SLF-10145-680M-□	68.0		0.1400	1.20
SLF-10145-101M-□	100		0.2000	1.00
SLF-10145-151M-□	150		0.3500	0.79
SLF-10145-221M-□	220		0.4700	0.65
SLF-10145-331M-□	330		0.6800	0.54
SLF-10145-471M-□	470		1.0300	0.47
SLF-10145-681M-□	680		1.6000	0.38
SLF-10145-102M-□	1000		2.8000	0.32
SLF-10145-152M-□	1500		3.4000	0.22

[Next](#)

[Back](#)