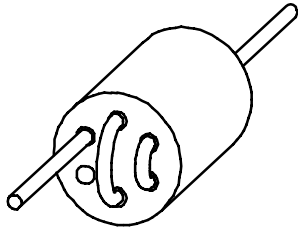




# Chilisin Electronics Singapore Pte Ltd

## Wide Band Choke , BC Series

### Feature:

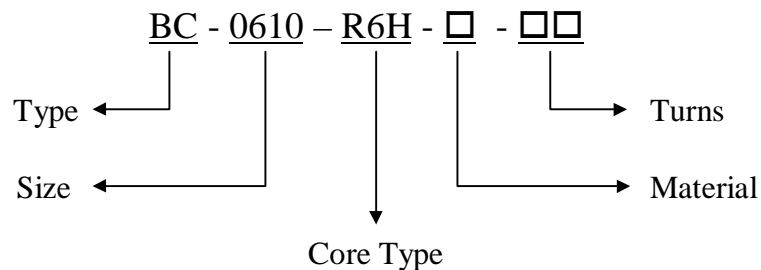


This type of Wide Band Chokes which has an impedance which is substantially resistive and constant.

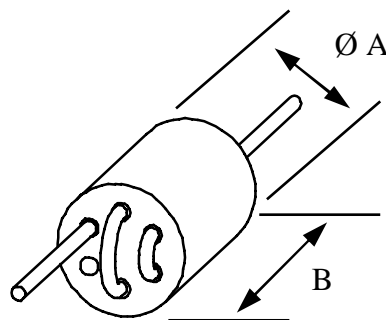
It is suitable for EMI shielding.

Low cost and with stand high current. Which is suitable for shielding on Power line in PCBA.

### Ordering Code:



### Dimension in mm:



Type	Core Dia.	Core Length	Core Type
BC - 0610 - R6H - □ - □□	6.0mm ± 0.2mm	10.4mm max	6 holes
BC - 0610 - R8H - □ - □□	5.33mm max	10.0mm max	8 holes

[Next](#)

[Back](#)



# Chilisin Electronics Singapore Pte Ltd

## Wide Band Choke , BC Series

---

### ELECTRICAL CHARACTERISTICS

Part Number	Turns	Typical Impedance (ohm) at		
		10 MHz	50 MHz	100 MHz
BC - 0610 - R6H - Y7 - 05	0.5	58	142	166
BC - 0610 - R6H - B - 05	0.5	68	111	129
BC - 0610 - R6H - Y7 - 10	1.0	95	231	273
BC - 0610 - R6H - B - 10	1.0	105	199	253
BC - 0610 - R6H - Y7 - 15	1.5	189	436	523
BC - 0610 - R6H - B - 15	1.5	189	436	523
BC - 0610 - R6H - Y7 - 15 x 2	1.5 x 2	189	436	523
BC - 0610 - R6H - B - 15 x 2	1.5 x 2	189	436	523
BC - 0610 - R6H - Y7 - 25	2.5	408	853	976
BC - 0610 - R6H - B - 25	2.5	397	738	800
BC - 0610 - R6H - Y7 - 30	3.0	538	1177	1093
BC - 0610 - R6H - B - 30	3.0	416	899	940
BC - 0610 - R8H - B <sub>319</sub> - 35	3.5	507	750	710

Others Material are also available upon request

[Next](#)

[Back](#)